

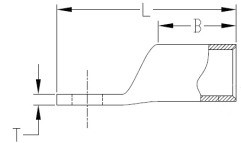
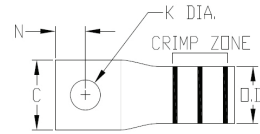
# Compression Connections

Aluminum / Copper — One Hole  
Uninsulated Aluminum Terminals

## TYPE YA-A (Continued)



AL9CU



▲ See Type YA-A Installation Tooling Table for Aluminum Terminals in this section for complete tool and die listing information.

Catalog Number	AL / Cu Conductor	Dimensions									Color Code	Die Index	Wire Strip Length	Temperature Rating
		Stud Size	Stud Hole Diameter (K)	No. of Holes in Pad	Outside Diameter (OD)	Barrel Length (B)	Pad Width (C)	Overall Length (L)	Hole Offset (N)	Pad Thickness (T)				
YA12ATN*	12 AWG 12 Sol.	#10	0.20	1	0.21	0.50	0.41	1.19	0.20	0.07	—	—	5/8	75° C
YA10ATN*	10 AWG 10 Sol.	#10	0.20	1	0.21	0.50	0.41	1.22	0.20	0.06	—	—	5/8	75° C
YA8CA1	8 AWG	#10	0.20	1	0.30	0.62	0.53	1.50	0.20	0.09	Blue	374	5/8	75° C
YA8CA3		1/4	0.28	1	0.30	0.62	0.53	1.65	0.25	0.09				
YA6CA1	6 AWG	1/4	0.28	1	0.34	0.75	0.47	1.84	0.33	0.14	Gray	346	3/4	90° C
YA6CA3		3/8	0.44	1	0.34	0.75	0.65	2.28	0.44	0.09				
YA4CA1	4 AWG	1/4	0.28	1	0.43	0.88	0.47	2.13	0.33	0.18	Green	375	7/8	90° C
YA4CA3		5/16	0.38	1	0.43	0.88	0.80	2.25	0.41	0.12				
YA4CA6		3/8	0.44	1	0.43	0.88	0.80	2.32	0.44	0.12				
YA2CA5	2 AWG	1/4	0.28	1	0.53	1.00	0.50	2.25	0.33	0.22	Pink	348	1-1/8	90° C
YA2CA1		5/16	0.38	1	0.53	1.12	0.88	2.50	0.41	0.16				
YA2CA3		3/8	0.44	1	0.53	1.12	0.88	2.56	0.44	0.16				
YA1CA1	1 AWG	3/8	0.44	1	0.54	0.91	0.76	2.59	0.44	0.19	Gold	471	15/16	90° C
YA25A1	1/0 AWG	5/16	0.38	1	0.60	1.00	0.60	2.31	0.41	0.21	Tan	296	1-1/16	90° C
YA25A3		3/8	0.44	1	0.60	1.05	0.82	2.67	0.63	0.21				
YA25A9		1/2	0.56	1	0.60	1.05	1.03	2.83	0.63	0.17				
YA26A7	2/0 AWG	5/16	0.38	1	0.67	1.17	0.67	2.52	0.41	0.24	Olive	297	1-3/8	90° C
YA26A6		3/8	0.44	1	0.67	1.17	0.67	2.79	0.44	0.24				
YA26A1		1/2	0.56	1	0.67	1.17	1.03	3.03	0.63	0.20				
YA26A8		5/8	0.69	1	0.67	1.17	1.03	3.03	0.63	0.20				
YA27A1	3/0 AWG	3/8	0.44	1	0.76	1.11	0.73	2.88	0.44	0.26	Ruby	467	1-1/2	90° C
YA27A3		1/2	0.56	1	0.76	1.31	1.04	3.27	0.63	0.26				
YA28A1	4/0 AWG	3/8	0.44	1	0.85	1.39	1.17	3.26	0.44	0.30	White	298	1-5/8	90° C
YA28A3		1/2	0.56	1	0.85	1.39	1.17	3.44	0.63	0.30				
YA29A9	250 kcmil	3/8	0.41	1	0.92	1.45	1.26	3.09	0.41	0.33	Red	324	1-9/16	90° C
YA29A1		1/2	0.56	1	0.92	1.45	1.26	3.53	0.63	0.33				
YA29A6		5/8	0.69	1	0.92	1.45	1.26	3.69	0.75	0.33				
YA30A6	300 kcmil	3/8	0.44	1	1.01	1.53	1.38	3.90	0.63	0.36	Blue	470	1-3/4	90° C
YA30A1	4/0 AWG CCA DLO (329/22)	1/2	0.56	1	1.01	1.53	1.38	3.90	0.63	0.36				
YA31A6	350 kcmil	3/8	0.44	1	1.11	1.85	1.52	3.95	0.44	0.39	Brown	299	2-1/8	90° C
YA31A1	250 kcmil	1/2	0.56	1	1.11	1.85	1.52	4.33	0.63	0.39				
YA31A12	CCA DLO (399/22)	5/8	0.65	1	1.11	1.85	1.52	4.33	0.44	0.39				
YA32A9	400 kcmil	3/8	0.41	1	1.19	2.26	1.62	3.95	0.41	0.43	Green	472	2-5/16	90° C
YA32A6		1/2	0.56	1	1.19	2.26	1.62	4.92	0.88	0.43			2-1/2	90° C
YA32A1		5/8	0.69	1	1.19	2.26	1.62	4.92	0.88	0.43			2-1/2	90° C
YA34A7	500 kcmil	1/2	0.56	1	1.32	2.34	1.80	5.02	0.63	0.46	Pink	300	2-5/8	90° C
YA34A1	350 kcmil CCA DLO (551/22)	5/8	0.69	1	1.32	2.34	1.80	5.56	0.88	0.46				

\* Contact BURNDY® for conductor, stud sizes and hole drillings not shown.

◆ For applications greater than 2000 Volts consult cable manufacturer for voltage stress relief instructions.

\* AL Conductor Only

Note: All dimensions shown are for reference only.

Field bending straight lugs to achieve an angular connection will void UL Listing / CSA Certifications and BURNDY will not be liable for the connection.